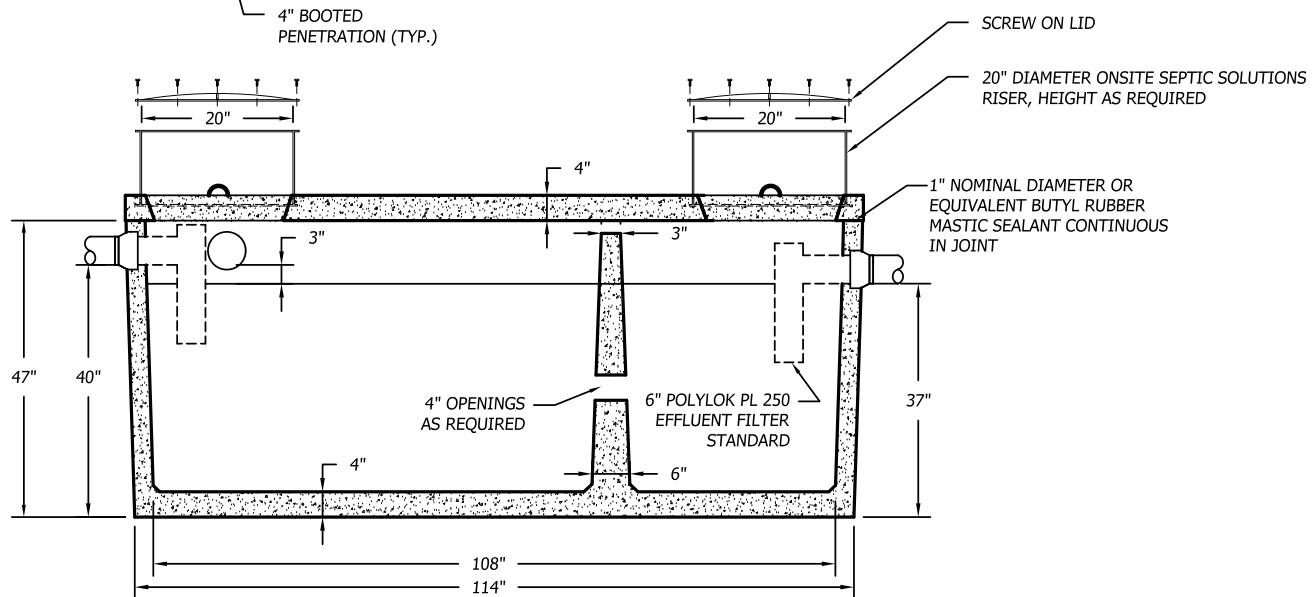


TOP

- SPECIFICATIONS:**
1. THE SEPTIC TANK MUST BE EQUIPPED WITH AN EFFLUENT FILTER THAT HAS BEEN TESTED AND SHOWN TO PREVENT THE PASSAGE OF SOLIDS LARGER THAN 1/8 INCH.
 2. CAPACITY = 1,004 GALLONS
 3. FULL CAPACITY = 1,308 GALLONS
 4. GALLONS PER INCH = 30.42 (AVERAGE)
 5. WEIGHT = 11,400 POUNDS±
 6. TANK TO MEET ASTM 1227C REQUIREMENTS
 7. TOP SEAM CONSTRUCTION
 8. JOINT SEALANT IS BUTYL RUBBER MASTIC TYPICAL OF CONSEAL CS-102.
 9. MAXIMUM OF 3 FEET OF COVER OVER STRUCTURE
 10. NOT DESIGNED FOR TRAFFIC AREAS
 11. ALL DIMENSIONS SHOW ARE PER ONSITE SEPTIC SOLUTIONS, LLC PRODUCTS 2017.



SECTION

1,000 GALLON (2 COMPARTMENT) TOP SEAM (LOW) PRECAST CONCRETE SEPTIC TANK

1/2" = 1'-0"



BUSINESS PARK AT CAMBRIDGE
 CAMBRIDGE, VT. 05444
 paul@onsitesepanticsolutions.biz
 TEL. 802-644-5500