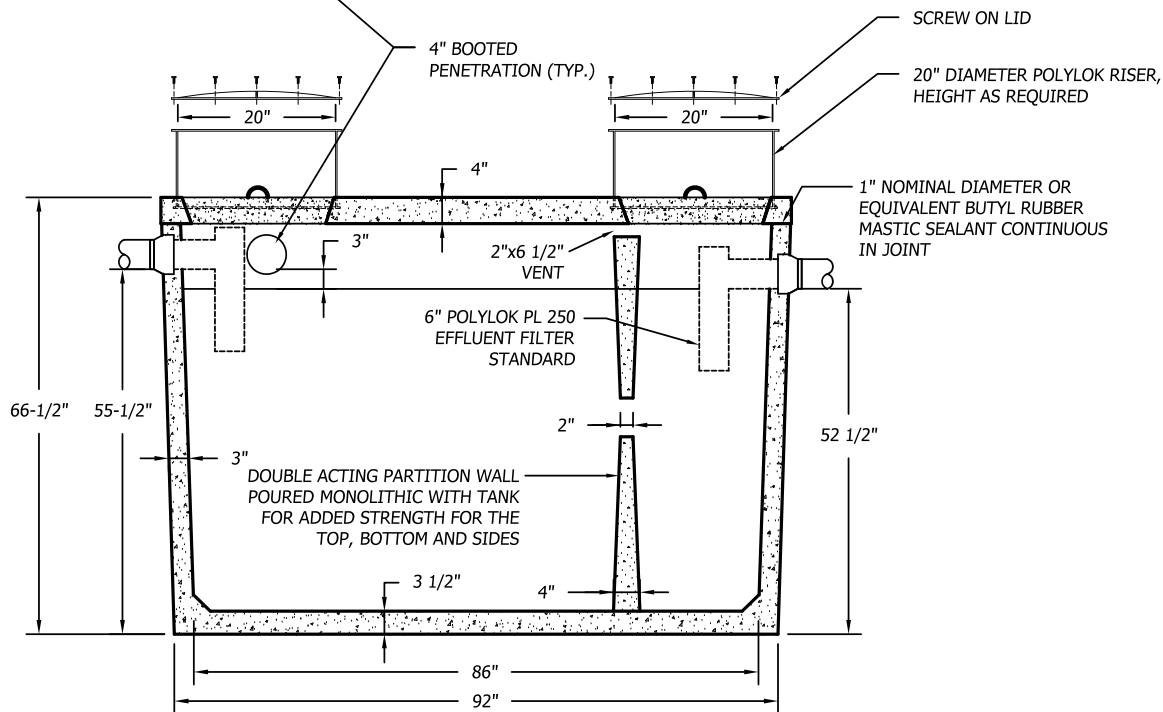


TOP



SECTION

SPECIFICATIONS:

1. THE SEPTIC TANK MUST BE EQUIPPED WITH AN EFFLUENT FILTER THAT HAS BEEN TESTED AND SHOWN TO PREVENT THE PASSAGE OF SOLIDS LARGER THAN  $\frac{1}{8}$  INCH.
2. CAPACITY = 1,008 GALLONS
3. FULL CAPACITY = 1,213 GALLONS
4. GALLONS PER INCH = 20.55 (AVERAGE)
5. WEIGHT = 9,400 POUNDS
6. MAXIMUM OF 3 FEET OF COVER
7. TANK TO MEET ASTM 1227C REQUIREMENTS
8. TOP SEAM CONSTRUCTION
9. JOINT SEALANT IS BUTYL RUBBER MASTIC TYPICAL OF CONSEAL CS-102.
10. NOT DESIGNED FOR TRAFFIC AREAS
11. ALL DIMENSIONS SHOW ARE PER ONSITE SEPTIC SOLUTIONS, LLC PRODUCTS 2019.

ALL TANKS TO BE PER SPECIFIED DETAIL OR EQUAL. ANY CHANGES TO BE APPROVED BY DESIGNER PRIOR TO INSTALLATION. NO SUBSTITUTES WILL BE ACCEPTED WITHOUT PRIOR APPROVAL.



1,000 GALLON 2 COMPARTMENT TOP SEAM PRECAST CONCRETE SEPTIC TANK

1/2" = 1'-0"

BUSINESS PARK AT CAMBRIDGE  
CAMBRIDGE, VT. 05444  
paul@onsitesepanticsolutions.biz  
TEL. 802-644-5500