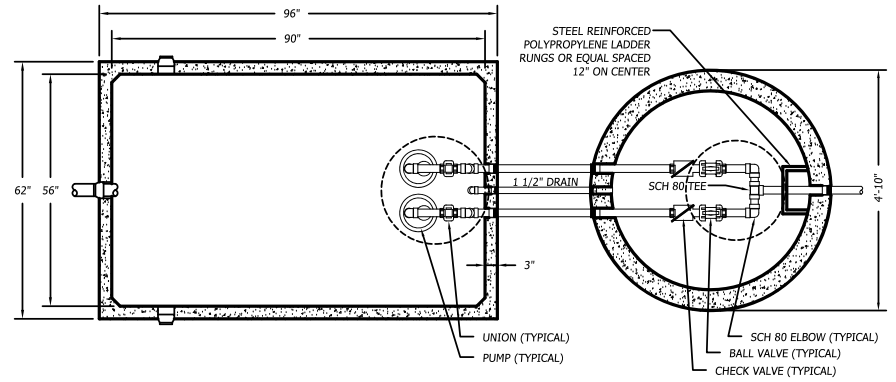


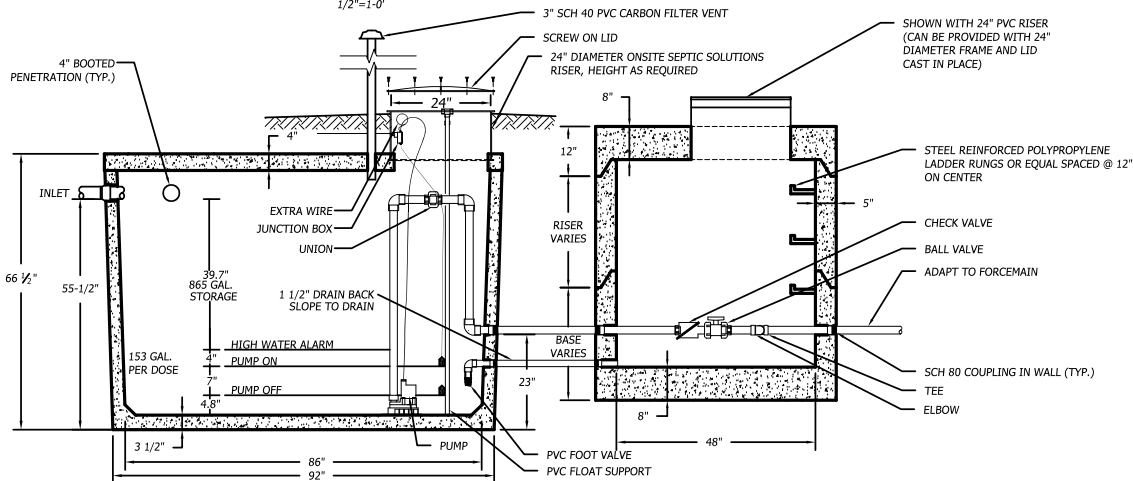
TOP VIEW

1/2"=1'-0"



TOP VIEW SECTION

1/2"=1'-0"



SECTION VIEW

1/2"=1'-0"

NOTES:

1. FOR PUMP SPECIFICATIONS REFER TO PUMP DESIGN BRIEF.
2. THE CONTRACTOR AND SUPPLIER SHALL COORDINATE POWER REQUIREMENTS PRIOR TO ORDERING OF THE PUMP STATION.
3. PER ONSITE SEPTIC SOLUTIONS, LLC (SUPPLIER), THE TOP OF THIS TANK SHALL BE BURIED NO DEEPER THAN 3 FEET BELOW FINISHED GRADE. IF A DEEPER BURIAL DEPTH IS NEEDED SEE SUPPLIER FOR SIMILAR TANKS THAT CAN BE BURIED DEEPER THAN 3 FEET.

SPECIAL NOTE:

1. ALL PIPING WITHIN PUMP STATION AND VALVE PIT TO BE 2" SCH 80 PVC UNLESS OTHERWISE SPECIFIED

SPECIFICATIONS:

1. TANK TO MEET ASTM 1227C REQUIREMENTS
2. TOP SEAM CONSTRUCTION
3. JOINT SEALANT IS BUTYL RUBBER MASTIC TYPICAL OF CONSAL CS-102.
4. NOT DESIGNED FOR TRAFFIC AREAS
5. CONCRETE MINIMUM STRENGTH 5000 PSI @ 28 DAYS
6. ALL DIMENSIONS SHOW ARE PER ONSITE SEPTIC SOLUTIONS, LLC PRODUCTS 2017.

1,000 GALLON DUPLEX PUMP STATION WITH VALVE PIT (TOP SEAM)



BUSINESS PARK AT CAMBRIDGE
CAMBRIDGE, VT. 05444
paul@onsitesepticsolutions.biz
TEL. 802-644-5500