

**NOTES:**

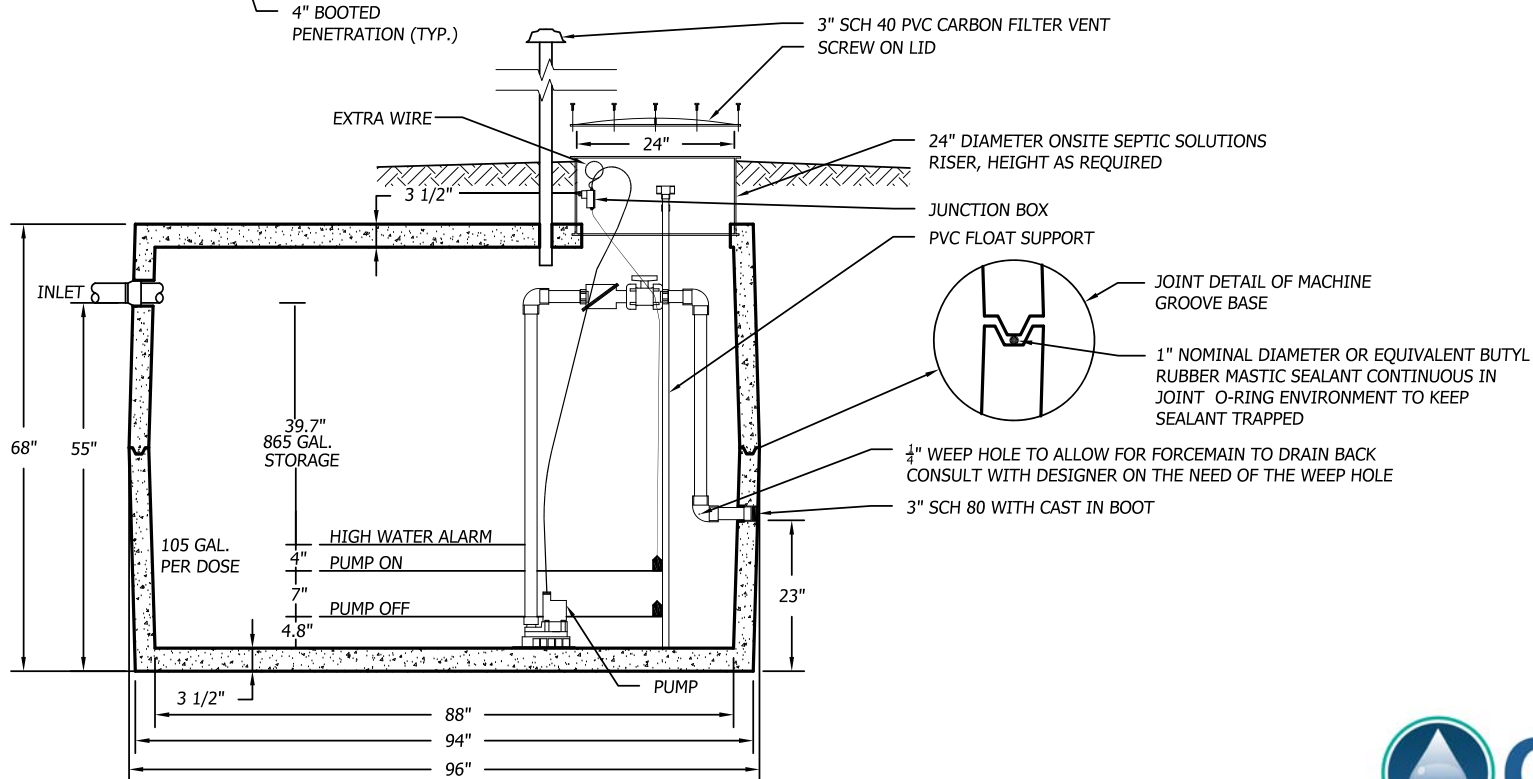
1. FOR PUMP SPECIFICATIONS REFER TO PUMP DESIGN BRIEF.
2. THE CONTRACTOR AND SUPPLIER SHALL COORDINATE POWER REQUIREMENTS PRIOR TO ORDERING OF THE PUMP STATION.
3. REFER TO THE PUMP STATION DESIGN BRIEF OR CONSULT THE DESIGNER ON THE NEED FOR A WEEP HOLE OR NOT.

**SPECIFICATIONS:**

1. TANK TO MEET ASTM 1227C REQUIREMENTS
2. MID SEAM CONSTRUCTION
3. JOINT SEALANT IS BUTYL RUBBER MASTIC TYPICAL OF CONSEAL CS-102.
4. NOT DESIGNED FOR TRAFFIC AREAS
5. ALL DIMENSIONS SHOW ARE PER ONSITE SEPTIC SOLUTIONS, LLC PRODUCTS 2017.

**SPECIAL NOTE:**

THIS TANK IS VACUUM TESTED PER ASTM 1227C STANDARDS AT ON-SITE SEPTIC SOLUTIONS, LLC PRODUCTS PRIOR TO BEING SHIPPED.



**VACUUM TESTED 1,000 GALLON MID SEAM HEAVY DUTY PRECAST CONCRETE PUMP STATION**

1/2"=1'-0'

BUSINESS PARK AT CAMBRIDGE  
CAMBRIDGE, VT. 05444  
paul@onsitepticssolutions.biz  
TEL. 802-644-5500