

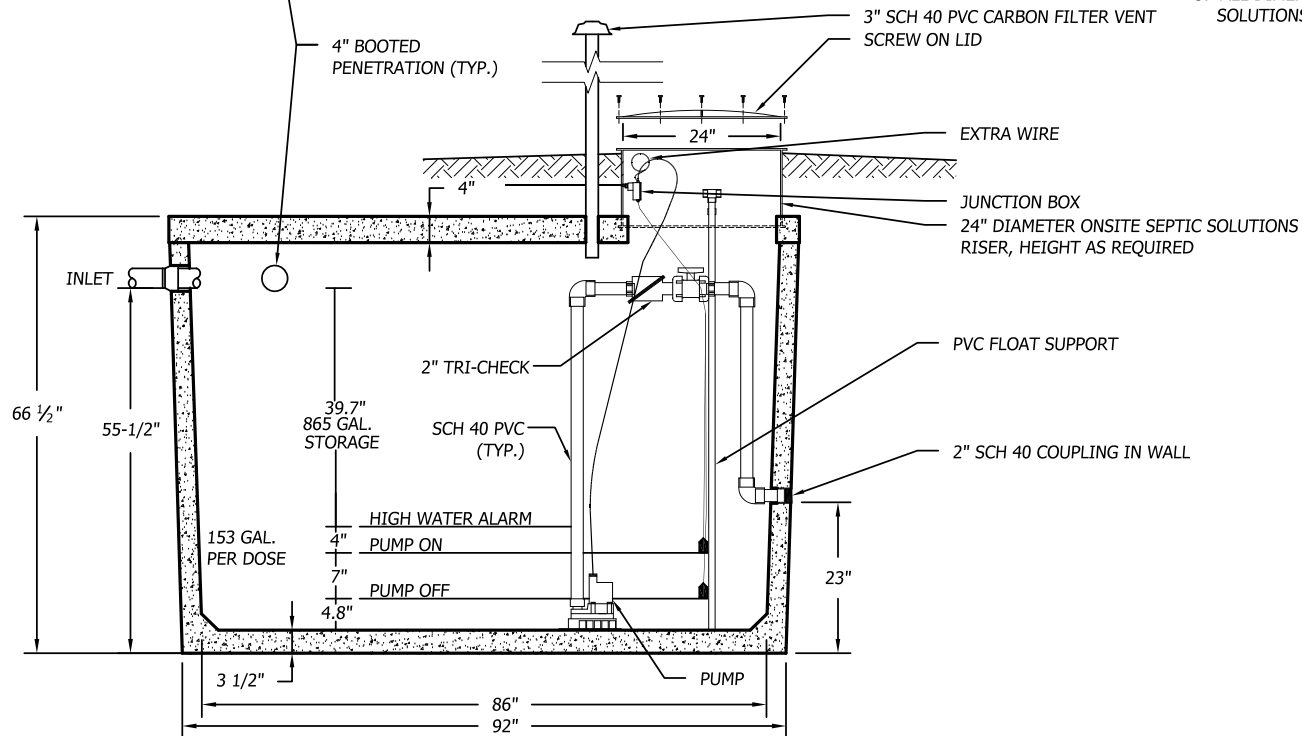
PLAN

NOTES:

1. FOR PUMP SPECIFICATIONS REFER TO PUMP DESIGN BRIEF.
2. THE CONTRACTOR AND SUPPLIER SHALL COORDINATE POWER REQUIREMENTS PRIOR TO ORDERING OF THE PUMP STATION.
3. PER ONSITE SEPTIC SOLUTIONS, LLC (SUPPLIER), THE TOP OF THIS TANK SHALL BE BURIED NO DEEPER THAN 3 FEET BELOW FINISHED GRADE. IF A DEEPER BURIAL DEPTH IS NEEDED SEE SUPPLIER FOR SIMILAR TANKS THAT CAN BE BURIED DEEPER THAN 3 FEET.
4. REFER TO THE PUMP STATION DESIGN BRIEF OR CONSULT THE DESIGNER ON THE NEED FOR A WEEP HOLE OR NOT.
5. CONTROL PANEL WITH AUDIBLE AND VISUAL ALARM TO BE MOUNTED ON SUPPORTS SET IN THE GROUND AT THE PUMP STATION, ON THE HOUSE OR IN THE MECHANICAL ROOM.

SPECIFICATIONS:

1. TANK TO MEET ASTM 1227C REQUIREMENTS
2. TOP SEAM CONSTRUCTION
3. JOINT SEALANT IS BUTYL RUBBER MASTIC TYPICAL OF CONSEAL CS-102.
4. NOT DESIGNED FOR TRAFFIC AREAS
5. ALL DIMENSIONS SHOW ARE PER ONSITE SEPTIC SOLUTIONS, LLC PRODUCTS 2017.



SECTION

1,000 GALLON PUMP STATION (TOP SEAM)

1/2"=1-0'



BUSINESS PARK AT CAMBRIDGE
CAMBRIDGE, VT. 05444
paul@onsitesepanticsolutions.biz
TEL. 802-644-5500