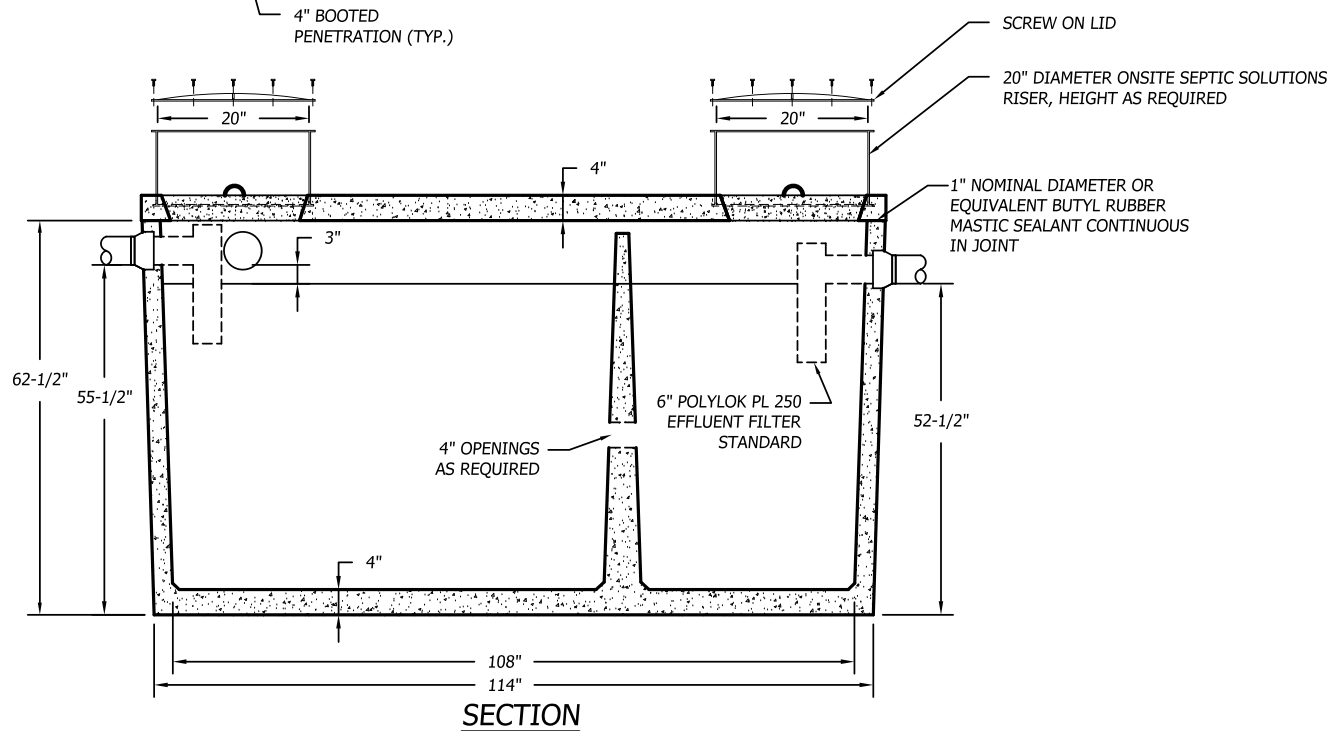


**SPECIFICATIONS:**

1. THE SEPTIC TANK MUST BE EQUIPPED WITH AN EFFLUENT FILTER THAT HAS BEEN TESTED AND SHOWN TO PREVENT THE PASSAGE OF SOLIDS LARGER THAN 1/8 INCH.
2. CAPACITY = 1,513 GALLONS
3. FULL CAPACITY = 1825 GALLONS
4. GALLONS PER INCH = 31.19 (AVERAGE)
5. WEIGHT = 13,000 POUNDS±
6. TANK TO MEET ASTM 1227C REQUIREMENTS
7. TOP SEAM CONSTRUCTION
8. JOINT SEALANT IS BUTYL RUBBER MASTIC TYPICAL OF CONSEAL CS-102.
9. NOT DESIGNED FOR TRAFFIC AREAS
10. ALL DIMENSIONS SHOW ARE PER ONSITE SEPTIC SOLUTIONS, LLC PRODUCTS 2017.



**1,500 GALLON (2 COMPARTMENT) TOP SEAM HEAVY DUTY PRECAST CONCRETE SEPTIC TANK**

1/2" = 1'-0"



BUSINESS PARK AT CAMBRIDGE  
CAMBRIDGE, VT. 05444  
paul@onsitesepanticsolutions.biz  
TEL. 802-644-5500