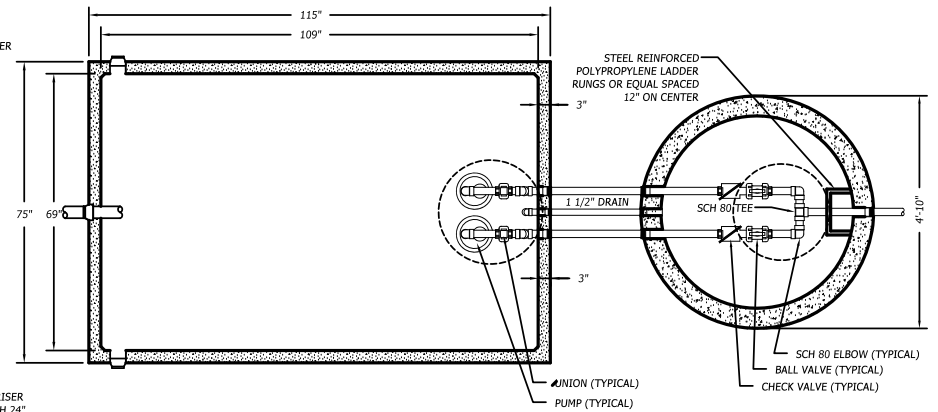


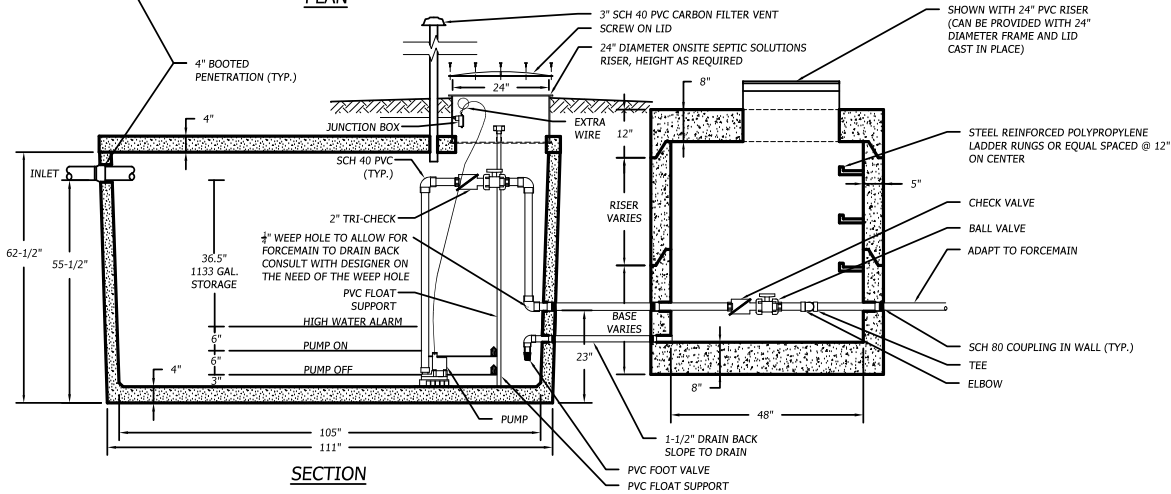
PLAN

SHOWN WITH 24" RISER AND COVER
(CAN BE PROVIDED WITH 24" DIA. FRAME AND LID CAST IN PLACE)



TOP VIEW SECTION

1/2"=1'-0"



SECTION

NOTES:

- FOR PUMP SPECIFICATIONS REFER TO PUMP DESIGN BRIEF.
- THE CONTRACTOR AND SUPPLIER SHALL COORDINATE POWER REQUIREMENTS PRIOR TO ORDERING OF THE PUMP STATION.
- PER ONSITE SEPTIC SOLUTIONS, LLC (SUPPLIER), THE TOP OF THIS TANK SHALL BE BURIED NO DEEPER THAN 3 FEET BELOW FINISHED GRADE. IF A DEEPER BURIAL DEPTH IS NEEDED SEE SUPPLIER FOR SIMILAR TANKS THAT CAN BE BURIED DEEPER THAN 3 FEET.
- REFER TO THE PUMP STATION DESIGN BRIEF OR CONSULT THE DESIGNER ON THE NEED FOR A WEEP HOLE OR NOT.

SPECIAL NOTE:

- ALL PIPING WITHIN PUMP STATION AND VALVE PIT TO BE 2" SCH 80 PVC UNLESS OTHERWISE SPECIFIED

SPECIFICATIONS:

- TANK TO MEET ASTM 1227C REQUIREMENTS
- TOP SEAM CONSTRUCTION
- JOINT SEALANT IS BUTYL RUBBER MASTIC TYPICAL OF CONSUAL CS-102.
- NOT DESIGNED FOR TRAFFIC AREAS
- CONCRETE MINIMUM STRENGTH 5000 PSI @ 28 DAYS
- ALL DIMENSIONS SHOW ARE PER ONSITE SEPTIC SOLUTIONS, LLC PRODUCTS 2017.

1,500 GALLON TOP SEAM PRECAST CONCRETE DUPLEX PUMP STATION

1/2" = 1'-0"



BUSINESS PARK AT CAMBRIDGE
CAMBRIDGE, VT. 05444
paul@onsitesepanticsolutions.biz
TEL. 802-644-5500