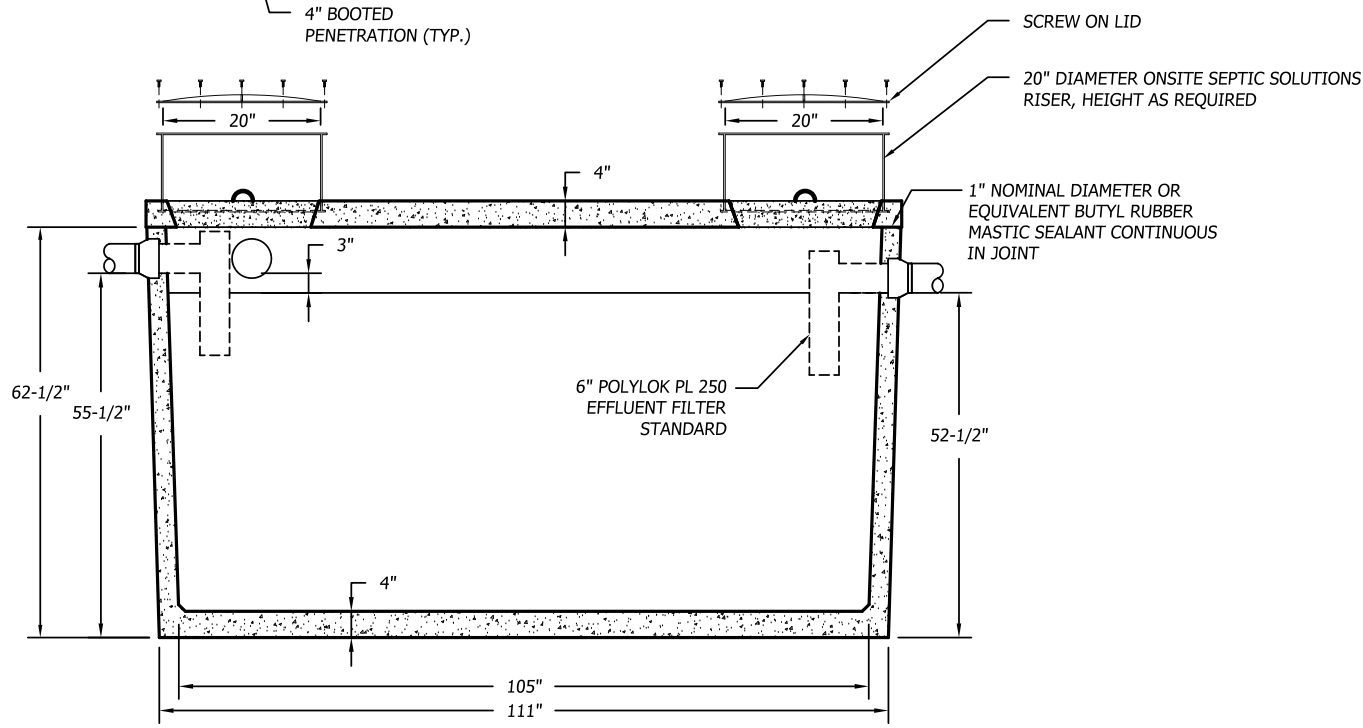


**TOP**

**SPECIFICATIONS:**

1. THE SEPTIC TANK MUST BE EQUIPPED WITH AN EFFLUENT FILTER THAT HAS BEEN TESTED AND SHOWN TO PREVENT THE PASSAGE OF SOLIDS LARGER THAN  $\frac{1}{8}$  INCH.
2. CAPACITY = 1,505 GALLONS
3. FULL CAPACITY = 1815 GALLONS
4. GALLONS PER INCH = 31.03 (AVERAGE)
5. WEIGHT = 11,400 POUNDS
6. MAXIMUM OF 3 FEET OF COVER
7. TANK TO MEET ASTM 1227C REQUIREMENTS
8. TOP SEAM CONSTRUCTION
9. JOINT SEALANT IS BUTYL RUBBER MASTIC TYPICAL OF CONSEAL CS-102.
10. NOT DESIGNED FOR TRAFFIC AREAS
11. ALL DIMENSIONS SHOW ARE PER ONSITE SEPTIC SOLUTIONS, LLC PRODUCTS 2017.



**SECTION**

**1,500 GALLON TOP SEAM PRECAST CONCRETE SEPTIC TANK**

1/2" = 1'-0"



BUSINESS PARK AT CAMBRIDGE  
 CAMBRIDGE, VT. 05444  
 paul@onsitesepticsolutions.biz  
 TEL. 802-644-5500