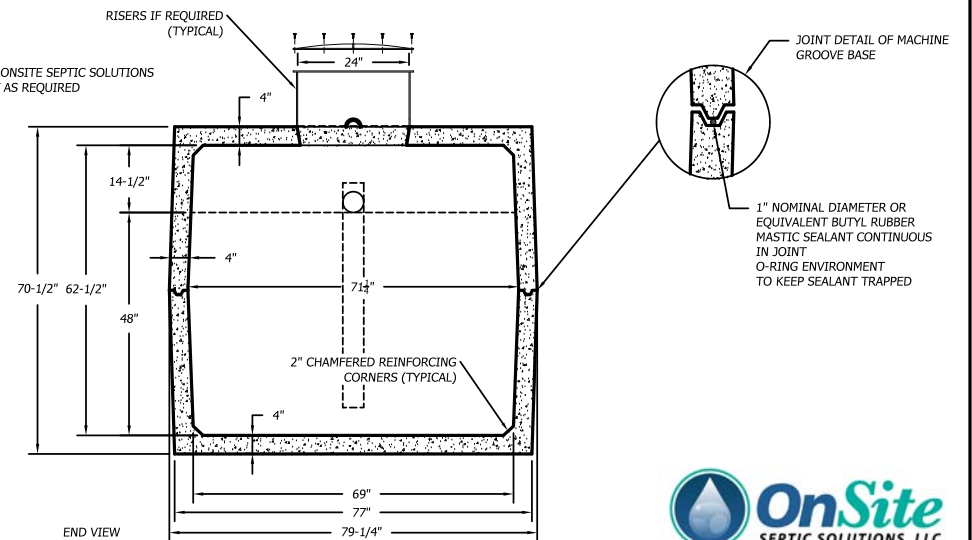
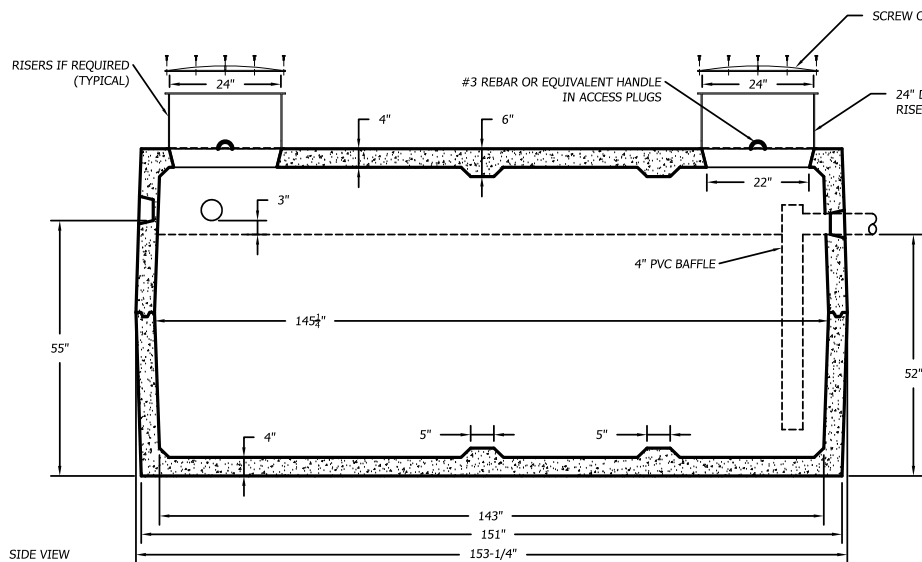


**SPECIFICATIONS:**

1. CAPACITY = 2,000 GALLONS WITH 14 1/2" AIR SPACE
2. FULL CAPACITY = 2,631 GALLONS
3. GALLONS PER INCH = 42.1 (AVERAGE)
4. REINFORCING STEEL - GRADE 60
5. CONCRETE: 4,000 PSI MIN.
6. WEIGHT = 21,000 POUNDS
7. MAXIMUM OF 3 FEET OF EARTH COVER IN RESIDENTIAL LAWN
8. TANK TO MEET ASTM C1227-13 AND ASTM C890-13 REQUIREMENTS
9. MID SEAM CONSTRUCTION
10. JOINT SEALANT: 1" NOMINAL DIAMETER OR EQUIVALENT BUTYL RUBBER MASTIC SEALANT CONTINUOUS IN JOINT.
11. ALL DIMENSIONS SHOW ARE PER ONSITE SEPTIC SOLUTIONS, LLC PRODUCTS 2017.



**2,000 GALLON MID SEAM 4" TOP & BOTTOM PRECAST CONCRETE GREASE TRAP**  
1/2"=1'-0"



BUSINESS PARK AT CAMBRIDGE  
CAMBRIDGE, VT. 05444  
paul@onsitesepoticsolutions.biz  
TEL. 802-644-5500