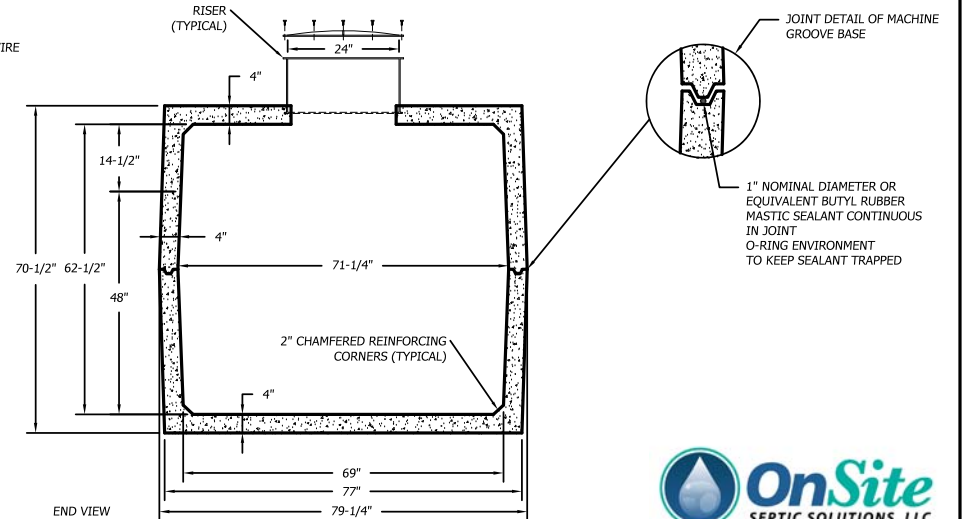
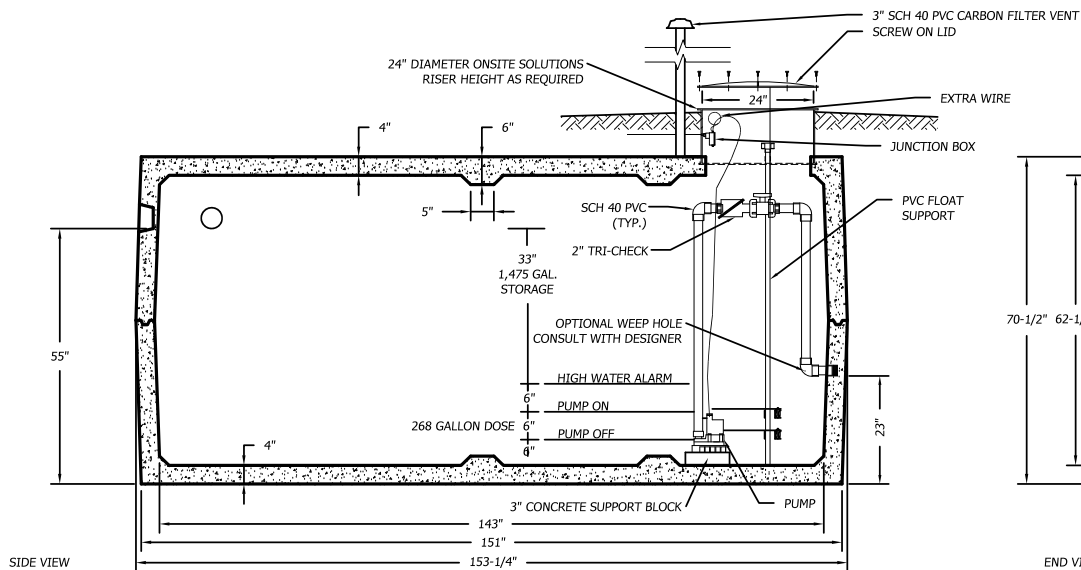


- NOTES:
1. FOR PUMP SPECIFICATIONS REFER TO PUMP DESIGN BRIEF.
 2. THE CONTRACTOR AND SUPPLIER SHALL COORDINATE POWER REQUIREMENTS PRIOR TO ORDERING OF THE PUMP STATION.
 3. MAXIMUM OF 3 FEET OF EARTH COVER IN RESIDENTIAL LAWN
 4. REFER TO THE PUMP STATION DESIGN BRIEF OR CONSULT THE DESIGNER ON THE NEED FOR A WEEP HOLE OR NOT.
 5. CONTROL PANE WITH AUDIBLE AND VISUAL ALARM MUST BE MOUNTED ON SUPPORTS SET IN THE GROUND AT THE PUMP STATION, ON THE HOUSE OR IN THE MECHANICAL ROOM.

- SPECIFICATIONS:
1. TANK TO MEET ASTM C1227-13 AND ASTM C890-13 REQUIREMENTS
 2. MID SEAM CONSTRUCTION
 3. JOINT SEALANT: 1" NOMINAL DIAMETER OR EQUIVALENT BUTYL RUBBER MASTIC SEALANT CONTINUOUS IN JOINT.
 4. ALL DIMENSIONS SHOWN ARE PER ONSITE SEPTIC SOLUTIONS, LLC PRODUCTS 2017.



2,000 GALLON MID SEAM 4" TOP & BOTTOM PRECAST CONCRETE PUMP STATION
1/2"=1'-0"



BUSINESS PARK AT CAMBRIDGE
CAMBRIDGE, VT. 05444
paul@onsitesepoticsolutions.biz
TEL. 802-644-5500