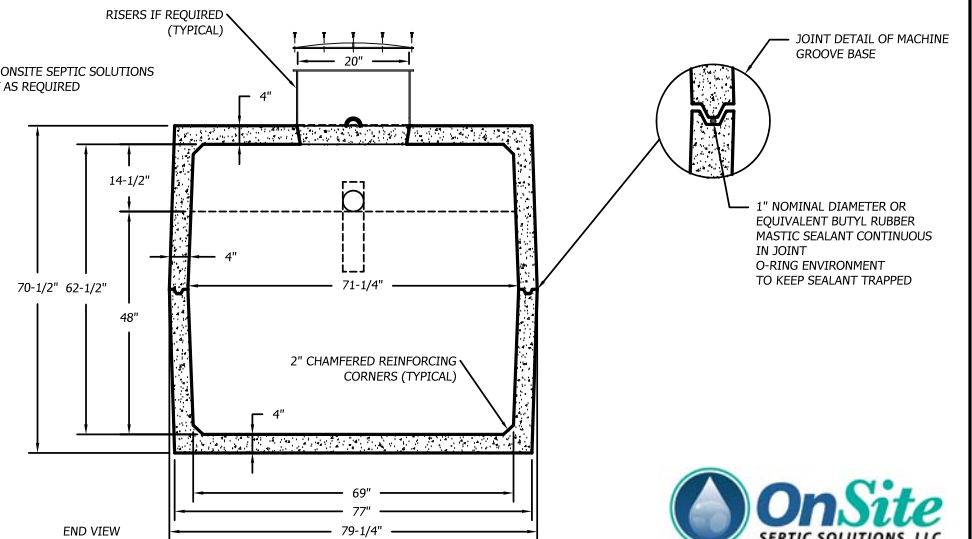
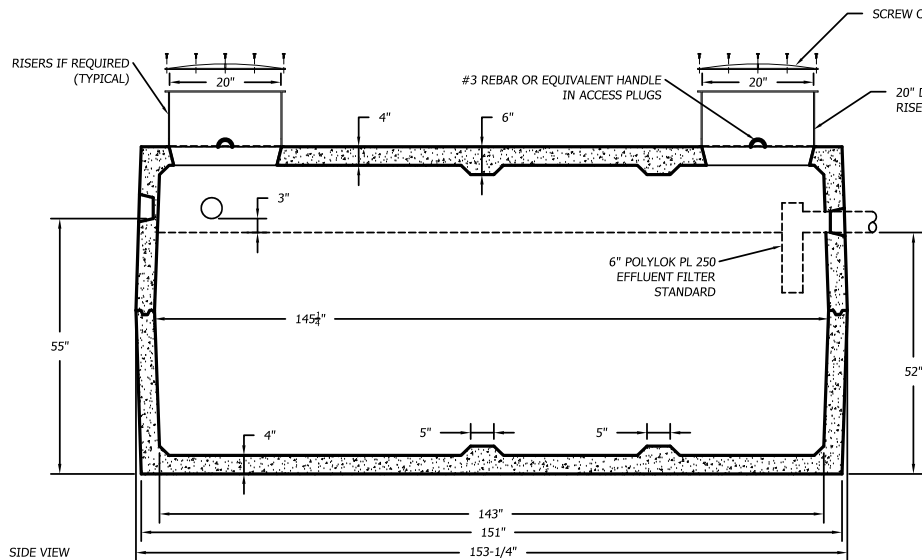


SPECIFICATIONS:

1. THE SEPTIC TANK MUST BE EQUIPPED WITH AN EFFLUENT FILTER THAT HAS BEEN TESTED AND SHOWN TO PREVENT THE PASSAGE OF SOLIDS LARGER THAN 1/8" INCH.
2. CAPACITY = 2,000 GALLONS WITH 14 1/2" AIR SPACE
3. FULL CAPACITY = 2,631 GALLONS
4. GALLONS PER INCH = 42.1 (AVERAGE)
5. REINFORCING STEEL - GRADE 60
6. CONCRETE: 4,000 PSI MIN.
7. WEIGHT = 21,000 POUNDS
8. MAXIMUM OF 3 FEET OF EARTH COVER IN RESIDENTIAL LAWN
9. TANK TO MEET ASTM C1227-13 AND ASTM C890-13 REQUIREMENTS
10. MID SEAM CONSTRUCTION
11. JOINT SEALANT: 1" NOMINAL DIAMETER OR EQUIVALENT BUTYL RUBBER MASTIC SEALANT CONTINUOUS IN JOINT.
12. ALL DIMENSIONS SHOW ARE PER ONSITE SEPTIC SOLUTIONS, LLC PRODUCTS 2017.



2,000 GALLON MID SEAM 4" TOP & BOTTOM PRECAST CONCRETE SEPTIC TANK
1/2"=1'-0"



BUSINESS PARK AT CAMBRIDGE
CAMBRIDGE, VT. 05444
paul@onsitesepoticsolutions.biz
TEL. 802-644-5500