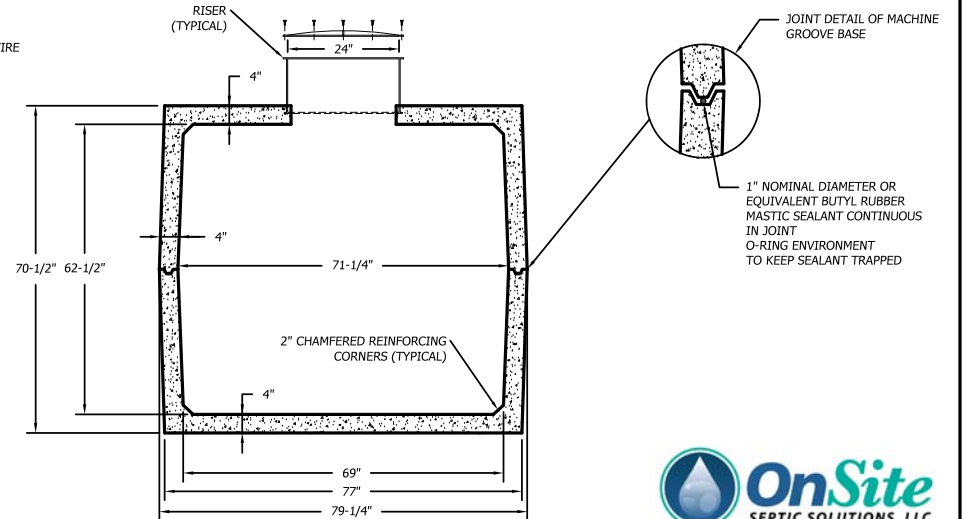
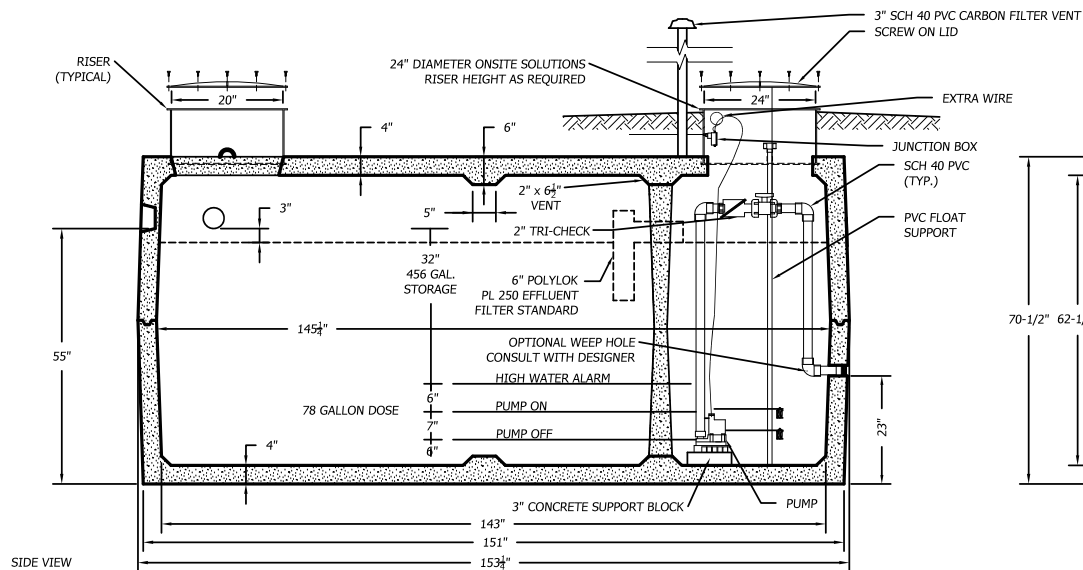


SPECIFICATIONS:

1. THE SEPTIC TANK MUST BE EQUIPPED WITH AN EFFLUENT FILTER THAT HAS BEEN TESTED AND SHOWN TO PREVENT THE PASSAGE OF SOLIDS LARGER THAN 1/8 INCH. FOR PUMP SPECIFICATIONS REFER TO PUMP DESIGN BRIEF.
2. REINFORCING STEEL - GRADE 60
3. CONCRETE: 4,000 PSI MIN.
4. WEIGHT = 21,000 POUNDS
5. MAXIMUM OF 3 FEET OF EARTH COVER IN RESIDENTIAL LAWN
6. TANK TO MEET ASTM C1227-13 AND ASTM C890-13 REQUIREMENTS
7. MID SEAM CONSTRUCTION
8. JOINT SEALANT: 1" NOMINAL DIAMETER OR EQUIVALENT BUTYL RUBBER MASTIC SEALANT CONTINUOUS IN JOINT.
9. ALL DIMENSIONS SHOW ARE PER ONSITE SEPTIC SOLUTIONS, LLC PRODUCTS 2017.



2,000 GALLON MID SEAM 4" TOP & BOTTOM PRECAST CONCRETE STEP TANK

1/2"=1'-0"



BUSINESS PARK AT CAMBRIDGE
CAMBRIDGE, VT. 05444
paul@onsitesepoticsolutions.biz
TEL. 802-644-5500