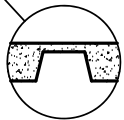
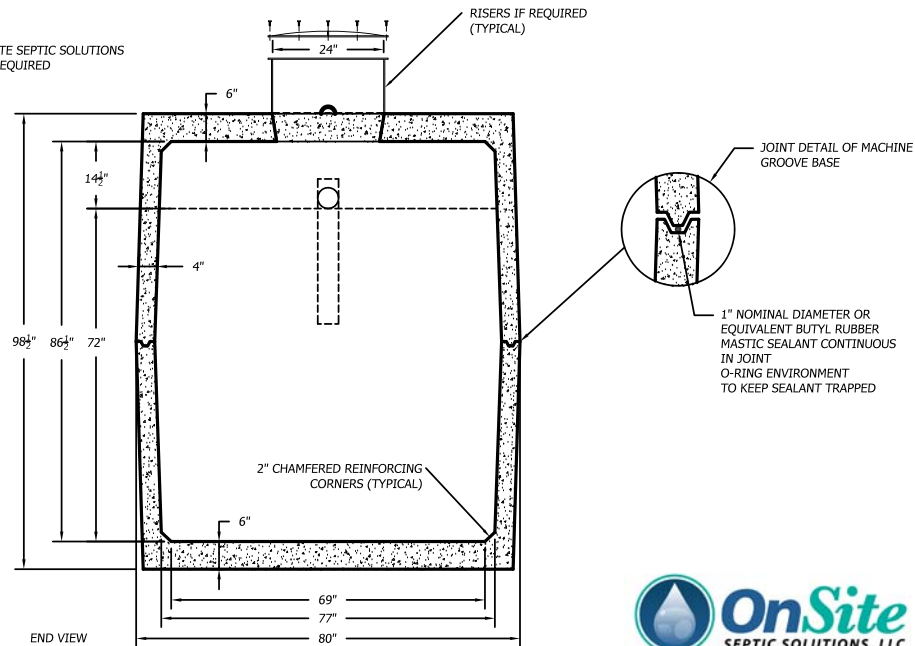
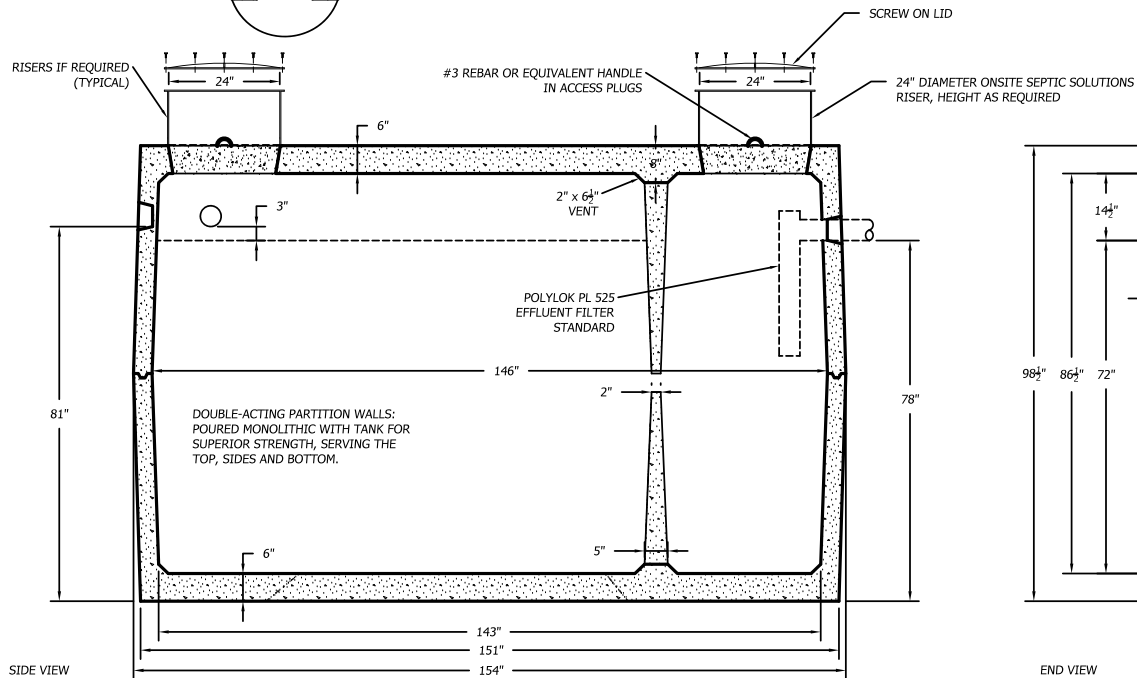


3 INLET PORTS



1" MINIMUM UNUSED KNOCKOUTS
ALL BLOCKOUTS 4" MINIMUM TO 6"
MAXIMUM PIPE



SPECIFICATIONS:

1. THE SEPTIC TANK MUST BE EQUIPPED WITH AN EFFLUENT FILTER THAT HAS BEEN TESTED AND SHOWN TO PREVENT THE PASSAGE OF SOLIDS LARGER THAN 1/8 INCH.
2. CAPACITY = 3,021 GALLONS WITH 14 1/2" AIR SPACE
3. FULL CAPACITY = 3,562 GALLONS
4. GALLONS PER INCH = 41.96 (AVERAGE)
5. REINFORCING STEEL - GRADE 60
6. CONCRETE: 4,000 PSI MIN.
7. WEIGHT = 27,000 POUNDS
8. MAXIMUM OF 3 FEET OF COVER IN PARKING LOT WITH H2O TRUCK
9. TANK TO MEET ASTM C1227-13 AND ASTM C890-13 REQUIREMENTS
10. MID SEAM CONSTRUCTION
11. JOINT SEALANT: 1" NOMINAL DIAMETER OR EQUIVALENT BUTYL RUBBER MASTIC SEALANT CONTINUOUS IN JOINT.
12. ALL DIMENSIONS SHOW ARE PER ONSITE SEPTIC SOLUTIONS, LLC PRODUCTS 2017.

3,000 GALLON MID SEAM 6" TOP & BOTTOM PRECAST CONCRETE 2 COMPARTMENT SEPTIC TANK

1/2"=1'-0"



BUSINESS PARK AT CAMBRIDGE
CAMBRIDGE, VT. 05444
paul@onsitesepanticsolutions.biz
TEL. 802-644-5500