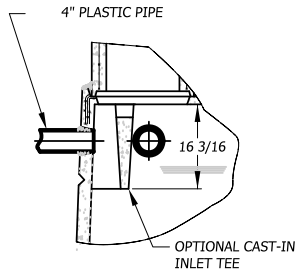
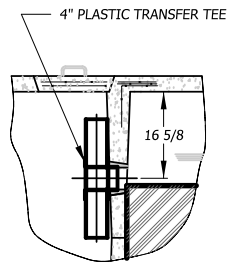


DETAIL 1



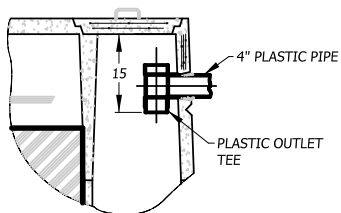
OPTIONAL INLET TEE

DETAIL 2

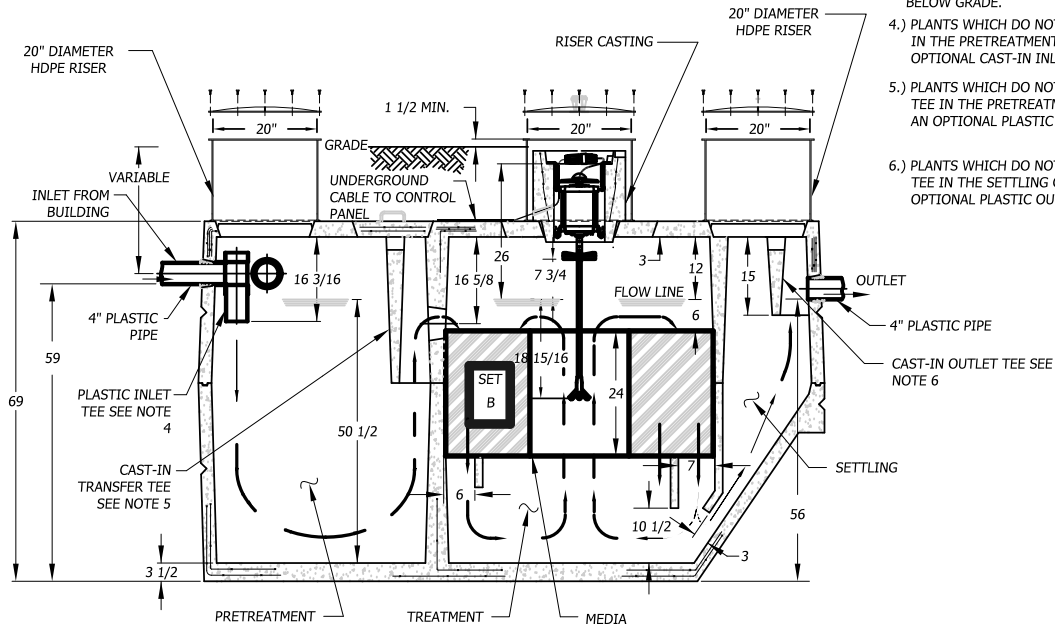
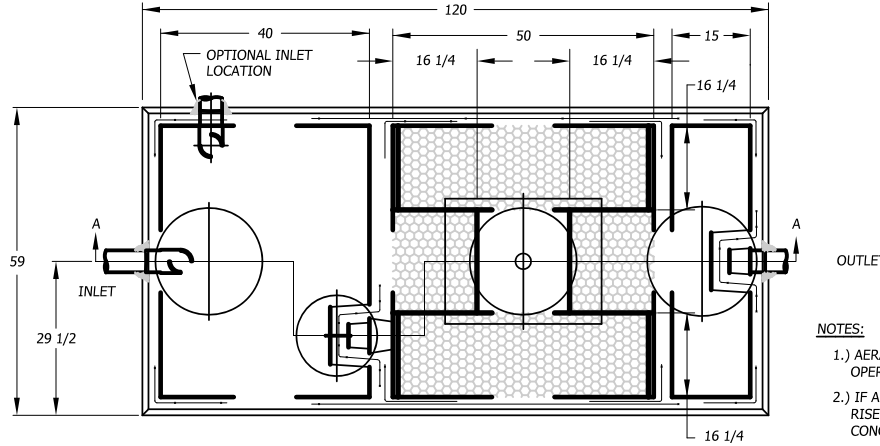


OPTIONAL TRANSFER TEE

DETAIL 3



OPTIONAL OUTLET TEE



SECTION A-A

NOTES:

- 1.) AERATOR MODEL 700LL IN CYCLED OR CONTINUOUS OPERATION MUST BE USED.
- 2.) IF AERATOR MOUNTING CASTING HAS NO RISER, RISERS ARE NOT REQUIRED HERE. REMOVABLE CONCRETE COVERS ARE REQUIRED.
- 3.) IF AERATOR MOUNTING CASTING HAS A RISER(S), COVERED RISERS ARE REQUIRED HERE. RISERS SHOULD BE DEVELOPED TO GRADE OR TO 6"-12" BELOW GRADE.
- 4.) PLANTS WHICH DO NOT USE A PLASTIC INLET TEE IN THE PRETREATMENT COMPARTMENT MAY USE AN OPTIONAL CAST-IN INLET TEE. SEE DETAIL 1.
- 5.) PLANTS WHICH DO NOT HAVE A CAST-IN TRANSFER TEE IN THE PRETREATMENT COMPARTMENT MAY USE AN OPTIONAL PLASTIC TRANSFER TEE. SEE DETAIL 2.
- 6.) PLANTS WHICH DO NOT HAVE A CAST-IN OUTLET TEE IN THE SETTLING COMPARTMENT MAY USE AN OPTIONAL PLASTIC OUTLET TEE. SEE DETAIL 3.

750 GPD PLANT
COMPONENT PARTS & INSTALLATION
©MMI
JET INC.

12

PATENTED

REV	REV'D	PART N.O.	DESCRIPTION							REV.		
			I	H	G	F	E	D	C	B	A	
												DATE
												DATE
			JET INC.									
			CLEVELAND, OHIO									
TITLE			SCALE									
HOME PLANT 750			NONE									
USED ON			UNLESS OTHERWISE SPECIFIED: ALL DIMENSIONS IN INCHES									
PROPERTY NOTICE: THIS DRAWING IS THE PROPERTY OF JET INC. AND MAY NOT BE REPRODUCED, COPIED OR USED WITHOUT WRITTEN PERMISSION.			DRAWING NUMBER									
			750									